

# ORCHARD VIEW ELEMENTARY

## February 2012



56734 Northridge Drive, Middlebury, IN 57650  
Office: 825-5405



Attendance: 822-5288



### FEBRUARY

- 7 - School Board Meeting, Ad Center @ 4:00 pm
- 8 - Market Day pick up, 5:00 - 6:00 pm
- 17 - 3rd Grade Dentist Visit
- 20 - Presidents Day - NO SCHOOL
- 21 - School Board Meeting, Ad Center @ 4:00 pm
- 27 - PTO meeting, cafeteria 6:30 pm
- 28 - PTO Skate Night at Eby Pines 5:30 - 8:00 pm
- 29 - Year Book Sale Ends . All Yearbook orders are Due.



### MARCH

#### **3 - PTO Carnival**

- 5 - 14 3rd grade ISTEP TESTING window
- 6 - School Board Meeting, Ad Center @ 4:00 pm
- 7 - Market Day pick up, 5:00-6:00
- 12 - 26 Penny's for Patient's Drive
- 13 - End of 3rd Grading period
- 20 - School Board Meeting, Ad Center 4:00 pm
- 22 - Parent Teacher Conferences
- 23 - NO SCHOOL
- 26 - PTO Meeting, cafeteria 6:30pm



### APRIL



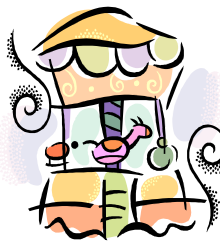
- 2 - 6 Spring Break - NO SCHOOL
- 17 - KINDERGARTEN ROUNDUP

(Students must be 5 years old by September 1st)

**"The mission of Orchard View Elementary is to nurture all students in a safe environment with positive experiences that develop caring, responsible citizens and lifelong learners."**

Check us out on the web at [www.mcsin-k12.org](http://www.mcsin-k12.org)

### PTO ORCHARD VIEW CARNIVAL AND AUCTION



Please mark your calendar and plan to attend a fun filled day at Orchard View on **Saturday, March 3rd** as we have our spring carnival. There will be lots of fun games along with silent and live auction items including some great baskets of various themes put together by each class. Raffle tickets will also be sold for students to win the opportunity to throw a pie in Mr. Sloan's face. More information will be sent home over the next few months. Please bring your family and friends to enjoy the fun and support our PTO.

### 3rd GRADE I-READ PARENT MEETING

Letters went home on 1/23 with all 3rd grade students inviting parents to a meeting at the NHS auditorium on 1/31 starting at 6:30. The purpose of the meeting is to explain and discuss the state's I-READ requirements and how I-READ could impact a student's ability to move to 4th grade if certain requirements are not met.

# What's New from the Counselor?

## Groups

I just began my Changing Families groups for 1<sup>st</sup> – 3<sup>rd</sup> grade, as well as a 1<sup>st</sup> grade Life Skills group. Two more Life Skills groups for 2<sup>nd</sup> grade are scheduled to start the week of Feb 20<sup>th</sup>, and the 3<sup>rd</sup> grade Life Skills groups will begin as soon as I have an open spot in my schedule. It will be very helpful to me and to your child's progress in group if you take a few minutes to discuss what he/she learned in group as well as reinforcing any activities I may be sending home. This will help to solidify the skill set as well as link home and school.

If your daughter is signed up to participate in a G.I.R.L.S. group, please remind her to be patient. I have spoken with many of the girls and I know they are anxious to get going. I most likely will not begin those groups until April, as I can only affectively manage so many

groups at a given time.

## Classroom Guidance

My classroom guidance schedule for February will be as follows:

Kindergarten will be discussing intro to Anger Management. 1<sup>st</sup> grade will be discussing Anger Buttons and Calming Down. 2<sup>nd</sup> grade will be discussing 10 Ways to Cool Down, and 3<sup>rd</sup> grade will be discussing Anger Mountain. Please review this lesson with your child the day that my half-sheet comes home giving you more information about the lesson.

## Make a change, beat cancer!

Be looking for information to come home regarding our upcoming Pennies for Patients campaign. We are excited to once again help out The Leukemia & Lymphoma Society with our spare change and pay it forward to those in need. We will begin the penny drive in March, so plan ahead and stick those loose pennies in a jar.

Jennifer Smith  
School Counselor  
822-5295

*"No act of kindness, no matter how small is ever wasted."*

## Community News

### YORK ELEMENTARY PTO AUCTION & CARNIVAL

On Saturday, February 4th York Elementary will be hosting their annual PTO auction. Doors will open at 9:00 am and the auction will begin at 10:00 am. If you have any questions, please contact the York office at 574-825-5312.

### JEFFERSON ELEMENTARY SPRING FLING

On Saturday, February 18th Jefferson Elementary will be hosting their annual Spring Fling. This fundraiser will be held from 11:00 - 3:00. If you have any questions please contact the Jefferson office at 574-822-5399

### MIDDLEBURY ELEMENTARY DONKEY BASKETBALL

On Saturday, March 10th Middlebury Elementary will have Donkey Basketball. A few Live & Silent Auction items will be added this year as well. For more information please contact the Middlebury Elementary Office at 574-825-2158

## Notes from the Nurse...



### NATIONAL DENTAL AWARENESS MONTH.

Dr. Deal and Dr. Carton are dentists here in Middlebury. They have offered to come and speak with our 3rd Graders on **February 17th** in the Art Room. We thank them for this gift of their time and knowledge.

### HEAD LICE

We are checking regularly and want you to also check your child's head at least Once a Week. If you find any, or if you need information on what to look for please call Mr. Oyer.

### CHICKEN POX ALERT

This is the season (Jan-Mar.) for Chicken Pox to frequently occur.

**Incubation time** - if exposed to it - usually 12-21 days

**Early Signs** - Mild fever, itchy rash, small red fluid-filled bumps start on stomach or back and spread to the face.

**Spread** - by sneezing or coughing on others or touching the rash

**Contagious** - 2 days before rash begins until last of rash is crusted and healing (5-7 days).

**Return to school** - when last of fluid sacs have scabbed over.

## Lost and Found



Please have your children continue to check the lost and found table in our cafeteria hallway. Items remaining after several weeks will be donated to a local charity. Smaller items such as eye glasses will be kept in the Office. We have a few pair of eye glasses in the office that we have accumulated over the years so if you lost them last year chances are we still have them.

The Lost & Found is located in our Cafeteria Hallway.

*“Do you ever wonder where all of the lost items in the world go? I am afraid that to find them would leave us buried in a pile of Socks!”*



## Free/Reduced Applications

Just a reminder that you may apply for free or reduced anytime during the year when your income changes. This includes breakfast, lunch and book rental.



### **LUNCH MONEY**

Daily Lunches - \$1.95

Weekly Lunches - \$9.75

Milk—\$.40

## Transportation Changes

As you would guess with over 350 students in the building, we receive many phone calls each day between 1:30 and 2:00 asking that we get messages to students who should go home a different way than they normally do. We are glad to do this in an emergency situation, but it would be far less confusing if, at least when you know this change in advance, to write us a note on the blue bus notes and send it in with your child. If you need additional notes, we have a large supply in the office. Thanks for your help with this

# No Bully Zone

Orchard View Elementary decided that as of February, we as a whole school, will wear our “No Bully Zone” shirts on the 1st Friday of every month. We want to unite the entire school by showing our support of the program. Please help us by hav-

ing your child wear their yellow “No Bully Zone” t-shirts on the following dates.

**Feb 3rd**

**March 2nd**

**April 13th**

**May 4th**

*“It is our choices that show what we truly are, far more than our abilities.”*



## Student Meal Accounts

You can access your student’s meal account through the Middlebury Community Schools website at [www.mcsin-k12.org](http://www.mcsin-k12.org). Once you are on the website look at the left-hand side for “Parent Links”. Double click parent links and then look for the “Mealtime” icon. Once you open Mealtime you can follow the instructions to create your profile. You will need your Student’s ID #. If you do not know this number, you may call **Gini Bennett, Bookkeeper at OVE, at 574-822-5094**. It is also on each of the customer balance statements that come home each week. Some of the features of this online tool:

**Mealtime Online – Meal Account Deposits, enables you to make prepay deposits and payments on balances for your student’s school lunch account, conveniently, safely and securely.**

**You can also view your student’s account activity, including onsite payments, online payments, current balance and a detailed history of meal and food item purchases.**

- ◆ **Deposits can be made with any Discover, VISA, or MasterCard credit or debit card.**
- ◆ **Credit card processing is completed through a secure authorization process. Mealtime Online does not retain or store Credit Card information and will never share your information with a third party.**
- ◆ **Online payments are processed immediately and will be reflected in the student’s cafeteria account automatically, according to the district’s scheduled transfer process.**
- ◆ **All student data that is transmitted is encrypted and authenticated every time you use the website.**
- ◆ **You can associate multiple students, from multiple schools, with one parent profile.**

**Mealtime Online can also be used to make payments for other school fees See [School Fee Payments](#) .**

**Mealtime Online can be used to make deposits into a student’s cafeteria account, or any additional accounts set up by the school district.**



# Kindergarten Round-Up

Kindergarten Round-up will be held on Tuesday, April 17th. Our first presentation will be at 3:00 pm. The second presentation will be at 4:15 pm. After a short introduction to our staff, you will be given some time to fill out paperwork for registration. In order to do this, we need to know in advance who the 2012-13 kindergarten students will be. If you have, or know of a child who will be entering kindergarten next year, please complete and return the form below.

**Children must be Five years of age**  
**on or before September 1, 2012**

CUT AND RETURN

KINDERGARTEN STUDENTS FOR 2012-13  
ORCHARD VIEW ELEMENTARY SCHOOL

NAME OF CHILD \_\_\_\_\_

DOB \_\_\_\_\_ M \_\_\_ F \_\_\_ PHONE NUMBER \_\_\_\_\_

AGE THE CHILD WILL BE ON 9/1/2012 \_\_\_\_\_

NAME OF PARENTS/GUARDIANS \_\_\_\_\_

CURRENT ADDRESS \_\_\_\_\_

NAME OF SITTER (Your child must be at least 6 years old to go to he Boys & Girls Club)

ADDRESS OF SITTER \_\_\_\_\_

PHONE NUMBER OF SITTER \_\_\_\_\_